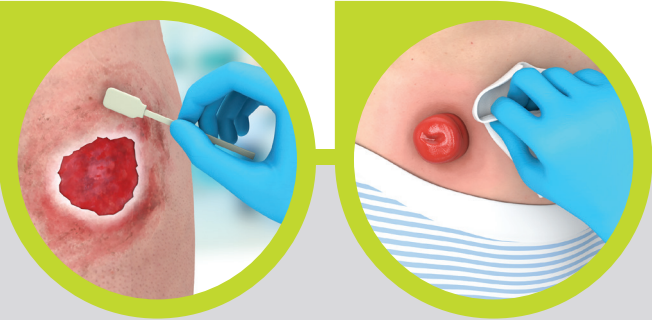


Instructions for Use  
LIFTEEZ Adhesive Remover - Non-Sting

3. Further Skin Protection



Using **MEDI DERMA-S Total Barrier Film Applicator or Wipe**

Apply **MEDI DERMA-S Total Barrier Film** to protect the skin underneath the replacement dressing, pouch or adhesive device.

4. Replace the Dressing



- Once the Barrier Film is fully dry\*, apply the replacement dressing, pouch or adhesive device as normal.

\*Drying Time:  
When using the Applicator or Wipe format, allow 5-10 seconds for the barrier film to fully dry.

MEDI DERMA-S  
Total Barrier Film - Non-Sting



What formats are available within the **LIFTEEZ** range?

Ordering Information (DT Location: Section IX C)

Selling Unit	Product Code	PIP Code	NHS-SC Product Code
<b>LIFTEEZ</b> Adhesive Remover - Non-Sting Aerosol - 50ml			
1	60833	389-7147	EXC041
<b>LIFTEEZ</b> Adhesive Remover - Non-Sting Wipe			
30	60321	341-3309	EXC042



Medicareplus  
INTERNATIONAL Est. 2008

Medicareplus International Limited  
Chemilines House | Alperton Lane | London | HA0 1DX | United Kingdom  
Telephone: +44 (0)20 8810 8811 | Email: [info@medicareplus.co.uk](mailto:info@medicareplus.co.uk)  
[www.medicareplus.co.uk](http://www.medicareplus.co.uk)

LIT065/MPL835/ML/PIL/07.19



Adhesive Remover  
Non-Sting



Patient Information Leaflet

TOTAL  
**BARRIER**  
PROTECTION™  
[WWW.TBPSKINCARE.INFO](http://WWW.TBPSKINCARE.INFO)

PREVENT.  
PROTECT.  
REPAIR.  
RESTORE.

# LIFTEEZ Adhesive Remover - Non-Sting

## Your Questions Answered

## Instructions for Use

### LIFTEEZ Adhesive Remover - Non-Sting

LIFTEEZ

#### What is **LIFTEEZ**?

- **LIFTEEZ** is a medical adhesive remover which helps to remove all types of adhesive dressings and stoma or securement devices that adhere to your skin, gently and painlessly. It helps to prevent skin damage and reduce pain or discomfort during dressing or device removal.

#### Which adhesive devices can be easily removed using **LIFTEEZ**?

- **LIFTEEZ** can be used to remove any kind of adhesive device that adheres to your skin, such as: dressings, adhesive padding, surgical tapes, stoma pouches, ECG electrodes and tube securement devices such as central lines, nasogastric tubes and peripheral cannulae (commonly called 'venflons').

#### Which **LIFTEEZ** format should I use?

- **LIFTEEZ** is available in an aerosol or wipe format. It is generally down to individual preference as to which format is used, but the wipe format is recommended for use on hairy skin or on the face for safe use near the eyes.

#### Can **LIFTEEZ** be used on sensitive and fragile skin?

- **LIFTEEZ** contains high quality healthcare grade silicone and does not contain any alcohol, so will not sting even when used on sore skin. It does not contain any ingredients that are known to cause irritation or sensitivity (for example, fragrance, latex or preservatives).
- **LIFTEEZ** is safe to use on even the most fragile skin, such as with babies or the elderly, or for those with blistering conditions, such as Epidermolysis Bullosa.

#### Will **LIFTEEZ** stop my next dressing or device adhering or sticking to my skin?

- **LIFTEEZ** dries in second and leaves no residue, so will not interfere with the application of your new dressing or device.

#### Are there any side-effects when using **LIFTEEZ**?

- When used as directed by the healthcare professional, there should be no side-effects. You should consult your healthcare professional if there are any signs of skin infection or irritation and stop using **LIFTEEZ** until the problem has been resolved.

#### Can **LIFTEEZ** be sprayed upside down?

- Yes, **LIFTEEZ** aerosol can be sprayed upside down and at any angle.

#### Do I need to remove **LIFTEEZ** after application to the skin?

- **LIFTEEZ** dries in seconds and leaves no residue, so does not need to be rinsed off after application.

#### How often should I use **LIFTEEZ**?

- **LIFTEEZ** should be used at each adhesive removal and dressing or stoma appliance change to prevent pain and skin damage.

#### Has **LIFTEEZ** been proven to work?

- **LIFTEEZ** has been evaluated by both healthcare professionals and patients and has been found to be very effective at fast and gentle removal of adhesive dressings and devices. It has been shown to reduce pain and anxiety associated with dressing or device removal, and to minimise the risk of skin redness or irritation.



**LIFTEEZ Adhesive Remover** forms part of our **Total Barrier Protection™** skin protection range, a complete cost-effective treatment strategy against moisture-associated skin damage and the prevention of medical adhesive-related skin injuries (MARSI).



#### PRECAUTIONS

#### LIFTEEZ Adhesive Remover:

For **EXTERNAL** use only. Do **NOT** use on infected areas of skin. Do **NOT** use if there are signs of skin reaction following product application, or if there are known allergies/sensitivities to any of the ingredients. Consult your clinician accordingly. Only use as directed. Do **NOT** use past expiry date or if product is damaged. Once opened, product can be used through to expiry date. For single patient use only. Keep out of reach of children.

## 1. Safe Adhesive Removal



#### Use on Porous Material (LIFTEEZ Aerosol & Wipes)

- Spray or wipe over a porous dressing or device for instant removal.
- Gently start to remove the dressing or device, pulling it parallel to the skin.

#### Use on Non-Porous Material (LIFTEEZ Aerosol & Wipes)

- Gently lift the edge of the dressing, pouch or adhesive device.
- Gradually spray or wipe underneath the edge whilst removing the dressing, pouch or adhesive device.

#### Use on the Face and Areas of Hairy Skin (LIFTEEZ Wipes)

- Gently lift the edge of the dressing or adhesive device.
- Gradually wipe underneath the edge whilst removing the dressing or adhesive device.

- Use additional **LIFTEEZ** to ease removal where necessary.
- **LIFTEEZ** does not require rinsing after application.
- **LIFTEEZ** dries in seconds and does not compromise the adhesion of the replacement dressing, pouch or adhesive device.

## 2. Removal of Adhesive Residue



#### Using LIFTEEZ Aerosol & Wipes

- Once the dressing, pouch or adhesive device has been removed, it is important to remove all adhesive residue.
- Use **LIFTEEZ** wipe or spray **LIFTEEZ** aerosol on a gauze swab and gently wipe the residue off the skin.

*Continued overleaf*



**Medicareplus**  
INTERNATIONAL  
Est. 2008